

Charities Appeals Supplement

The Charities Appeals Supplement continues to help develop fundraising revenue streams for charities through legacies, corporate support and donation. This section is written by charities detailing their appeals. It is easy to use with a categorised index below and an A–Z index at the end.

If your client is considering leaving a legacy to charity, please encourage them to browse through the appeals when making that important decision. Please mention the Charities Appeals Supplement when contacting a charity.

The team at the Charities Appeals Supplement would like to thank you for your continuing support; especially those who have left legacies to our featured charities over the last year.

NewLawJournal

Classified index

Animals and birds

Friends of the Animals..... inside front cover
Lord Dowding Fund for Humane Research CA3
National Anti-Vivisection Society..... CA2
Redwings Horse Sanctuary CA3
Tigglywinkles – the Wildlife Hospital Trust CA5

Conservation

Tigglywinkles – the Wildlife Hospital Trust CA4

Cultural and environmental

Artists Futures Fund CA4

Education

Friends of the Animals..... inside front cover
Tigglywinkles – the Wildlife Hospital Trust . CA5

Medical research and welfare

AlphaBiolabs.....CA7
Cancer Prevention Research Trust..... CA1
Independent Diabetes Trust..... CA2

Lord Dowding Fund for Humane Research CA3
National Anti-Vivisection Society..... CA2

Social services and welfare

Artists Futures Fund..... CA4

Trades and professions

Artists Futures Fund..... CA4
Benevolent Fund for Nurses in Scotland CA2
The Ripple PondCA5-6

Help us beat cancer with your legacy



Our sacred mission: the prevention of cancer

For legacies, *in memoriam* gifts and donations

Cancer Prevention Research Trust

231 Roehampton Lane, London SW15 4LB

Tel: 020 8785 7786 Fax: 020 8785 6466

E-mail: cppt45@yahoo.co.uk

Registered Charity No. 265985



www.cancerpreventionresearch.co.uk

INDEPENDENT DIABETES TRUST



Do you have Diabetes?

Do you know someone with Diabetes?

As a small charity with a big mission
WE NEED YOUR HELP...

We offer free support and information to people with diabetes, their families and health care professionals on the issues that are important to them.

Our Helpline offers a friendly, understanding ear when the going gets tough. Your help will enable us to continue to support people with diabetes and provide much needed aid to children in developing countries.

We rely entirely on voluntary donations. So, if you are thinking about making a donation to charity, or updating your Will, please consider a gift to help us continue our work. Please make donations to "Diabetes Trust Research and Care Fund."

**FOR MORE INFORMATION
PLEASE CONTACT US:**

EMAIL:
martin@iddinternational.org
or TELEPHONE:
01604 622837

Independent Diabetes Trust
P O Box 294, Northampton NN1 4XS

www.iddinternational.org
Charity Number: 1058284
Registered Number: 3148360



THE BENEVOLENT FUND FOR NURSES IN SCOTLAND

*THE FUND WHICH
WAS STARTED IN 1925
IS STILL NEEDED TODAY*

The Fund for Nurses was established to give assistance to members of the profession who have trained or worked in professional posts in Scotland.

Financial grants are given to:

- Individuals of any age who are experiencing financial difficulties due to their inability to continue working.
- Retired members of the profession who receive little or no pension.

Sadly more and more nurses are finding it necessary to seek our help and through your generosity, we are able to offer additional support in the form of single grants to those less fortunate members of our profession.

The Fund is administered by a Committee of Trustees, most of whom are members of the nursing profession.

**Donations may be sent to
the Secretary at the Registered Office**

Tel: 07584 322257
www.bfns.org.uk

*Registered Scottish Charity No: SC006384. A company
limited by guarantee registered in Scotland No: SC357442
Registered Office: 24A Ainslie Place, Edinburgh EH3 6AJ*

If you believe in reincarnation there are some animals you wouldn't want to be

Imagine a life of imprisonment in a cramped cage and being the subject of constant experimentation; a lifetime of suffering followed by a painful death. That's the cruel and futile fate suffered by millions of laboratory animals in the name of research.

The National Anti-Vivisection Society (NAVS) is the world's premier and leading group, working for an end to the suffering of animals in laboratories.

Working within the law, we lobby Parliament, produce scientific reports, educational materials and videos; conduct undercover investigations and expose law breaking. We fund non-animal scientific and medical research.

Please help us to help laboratory animals by making a bequest today to the National Anti-Vivisection Society,
Vox Studios North, 1 Durham Street, London SE11 5JH



For a free guide to making a will to help laboratory animals call us today on
020 7630 3340 or visit www.navs.org.uk



Help Finance An Evolution

Will you leave a lasting legacy of compassion and help scientific advancement? The Lord Dowding Fund finances scientific and medical research without the use of animals. We believe that cruel animal techniques have no place in 21st century science.

We have supported major advances in many fields including neuroscience, cancer research, and safety testing – we developed a humane British Standard Test for the toxicity of dental fillings. Your legacy could help save the lives of animals and advance scientific research.

Help finance an evolution in medical science and leave a lasting legacy, with a bequest today to the:

Lord Dowding Fund,
Vox Studios North, 1 Durham Street, London SE11 5JH



For a FREE guide to making a will to help laboratory animals call us today on 020 7630 3340 or visit www.ldf.org.uk



Will you remember
the horses at
Redwings
Horse Sanctuary?

Remember Redwings in your Will and save the lives of hundreds of horses in desperate need for years to come.

Call **01508 481030** or email legacies@redwings.co.uk
to find out how to leave a legacy today.

Thank you

If you
love horses,
remember them!



Last year we helped over 80,000 wild hedgehogs, birds and animals like Rudolph



Please help me get better

Come and have a look around our Visitor Centre

Opening times can be found on our website www.tiggywinkles.com



is the busiest wildlife hospital in the world

Not only do we treat more hedgehogs than any other wildlife hospital, but our caring team saves lives every single day. Our aim is simple; to treat all injured British wild birds and animals, then return them to the wild. Like Rudolph, who arrived badly injured at just five days old. The road accident that killed his mother left him with three badly broken legs. Our specialist care saved this poor little deer from suffering and he is now facing a brighter future. But it is only with your support that we can help casualties like Rudolph, so please remember Tiggywinkles when making your Will.

Our dear late friend Dame Thora Hird was an ardent supporter of our work. She actively encouraged others to help us secure funding for our lifesaving work to continue. Your legacy will ensure helps is always at hand for all British wildlife; in Dame Thora's own words,



"All the little wild creatures and I thank you so very much".

For more information please contact:

Melanie Kingham,
Tiggywinkles,
Aylesbury,
Buckinghamshire,
HP17 8AF

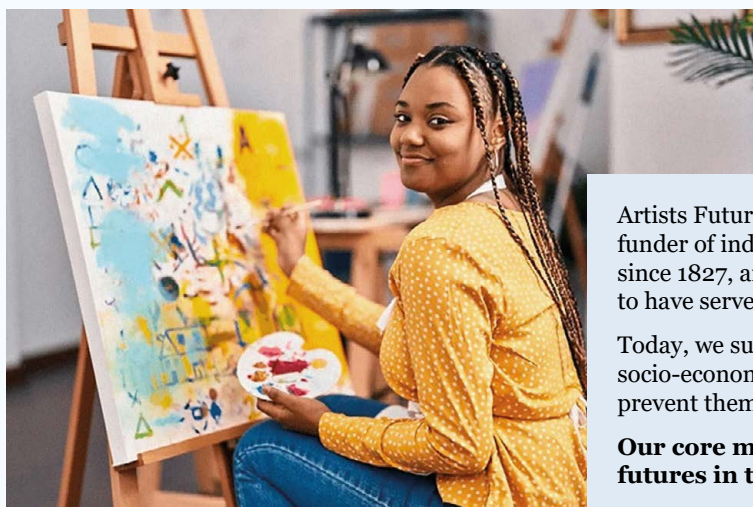
01844 292 292

mail@tiggywinkles.org
www.tiggywinkles.com

Registered Charity No. 1200460



Helping Artists Thrive



Artists Futures Fund (AFF) is an established and well-respected funder of individual artists in need. Operating under a Royal Charter since 1827, and founded by a group of philanthropists, AFF is proud to have served the UK's artists' community for over 200 years.

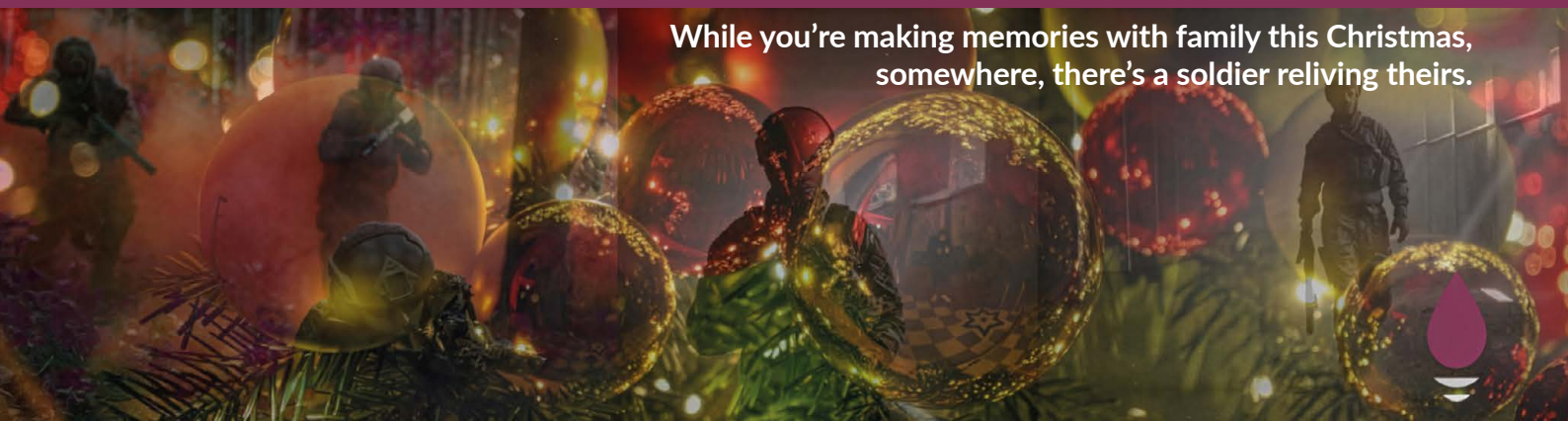
Today, we support talented individuals to overcome significant socio-economic, physical and mental health barriers that would prevent them from pursuing careers as artists.

Our core mission is to open doors to diverse and exciting futures in the arts.

We believe that in a period of financial constraint, protecting artistic talent is an investment in the UK's creative future. We are actively seeking donations so we can expand our support for talented artists in need.

Please visit www.artistsfuturesfund.org to learn more about leaving a legacy to Artists Futures Fund or how to make a donation today. Thank you.

Artists Futures Fund is the working name of The Society for the Management and Distribution of The Artists Fund. Formerly known as the Artists' Benevolent Fund. Registered charity no: 270585



While you're making memories with family this Christmas, somewhere, there's a soldier reliving theirs.



Every month, healthcare services and charities received hundreds of referrals a month for veteran support. But it's the families quietly supporting their loved one behind the scenes, unheard, and unthought of this Christmas that urgently need our help.

Whether they're supporting a loved one with PTSD, emotional injury, moral injury or a physical injury, too many military families are struggling.

Like Keira's* young children who can't go and see Father Christmas with Daddy because the crowds are overwhelming.

Like Grace* who's standing by her alcoholic partner, Lucy's* side at her Christmas party, knowing that it won't be "just the one drink".

Like Alan* and Theresa* for whom Christmas looks a little different this year as their daughter, who was a medic on Op Herrick, attempted to end her life.

For some families, Christmas isn't all "mistletoe and wine". It's navigating complex triggers, treatment pathways over the festive period, addictions and suicide prevention plans. The Ripple Pond is there for these families.

We're not a veteran's charity; we exist solely for the families. Mainstream and statutory services typically design support around the veteran, not the family. Their systems often require the veteran's engagement, assessment, or consent, joint attendance or joint participation, or their services are triggered by the veteran's clinical or welfare pathway.

This means that if the veteran is unwilling, unable, fearful or reluctant to engage, as is common with PTSD, moral injury, or cultural stigma then the family is effectively locked out of support.

Unlike most services, support offered by The Ripple Pond is family-centred and independent of the veteran's level of engagement. Families can access help in their own right.

Often, this help is life-saving, and B* is an example of this.

But we can't continue this vital work without your support. Please consider leaving a donation or legacy gift in your will to The Ripple Pond this Christmas. You'll be helping us to:

- Expand our peer support offering
- Fund ongoing wellbeing workshops for families
- Help to increase our capacity to offer more one to one support for those that so desperately need it.

Give today, change tomorrow.
Find out more at www.theripplepond.org/legacy



B's STORY (name anonymised)

Responding to risk with compassion: safeguarding in action

In December 2023, "B" contacted The Ripple Pond through a self-referral, having been signposted by Op Courage. At the time, she was facing multiple challenges – managing a physical disability, the complex demands of caring for four children with additional needs, and the emotional toll of supporting her husband, who was living with PTSD.

Emotionally and physically exhausted, B reached out during a very low point. She was welcomed into our peer support network where she could connect with others in a safe and supportive space, and we provided her access to a range of PTSD-focussed information sessions to help build understanding and resilience.

Although B initially decided to step back from our peer support group, she remained part of our private Members' Facebook community- another confidential space where members can share, seek guidance, and find connection.

In June 2024, B shared an anonymous post within that group that raised serious concerns about her well being.

Our team responded immediately, arranging a call to ensure she was safe and to explore what further support might be needed. During that conversation, she disclosed deeply worrying details about her husband's behaviour. Following a full risk assessment, we made a referral to a Multi Agency Risk Assessment Conference (MARAC) and a child safeguarding referral.

Although B was allocated an Independent Domestic Violence Advisor (IDVA), her case was not initially progressed by MARAC. Throughout this time, we

maintained regular contact to check on her safety and ensure continued access to IDVA support. When B later chose to withdraw from services, we respected her decision while reassuring her that our support would remain available whenever she was ready to reconnect.

Subsequent communication revealed that her husband had been accessing her devices, significantly compromising her safety. This initiated a second risk assessment and MARAC referral, and B began receiving structured support from her IDVA, the police, children's services, local authority housing, and education safeguarding teams.

The journey has been long and difficult, but B's progress has been remarkable. Her husband has since left the family home and continues to receive support through Op Courage. Although they remain in contact for the sake of their daughter, B has reported feeling significantly better, both mentally and physically. Her anxiety has eased, her sleep has improved, and she feels stronger and more in control of her life.

With safety measures and protective boundaries in place, B is now able to fully engage with the counselling options we have provided, taking steps towards long-term healing and stability.

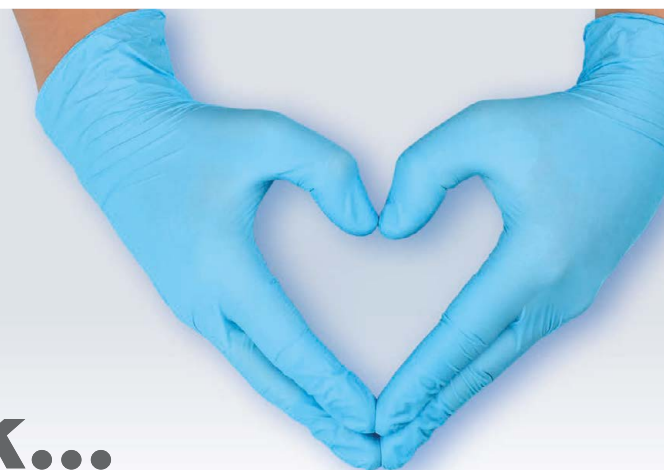
B's story is a powerful testament to the strength, determination, and resilience of those we support. It highlights the crucial role The Ripple Pond plays in transforming lives, providing vital connection, advocacy, and hope at a time when it is needed most.

WITH GRATEFUL THANKS
To our funders



AlphaBiolabs™

Drug, Alcohol & DNA testing that gives back...



For a number of years, AlphaBiolabs have been supporting charities working with some of the UK's most vulnerable children and families, through our **Giving Back** initiative.

How does Giving Back work?

For every testing instruction received from family law professionals and social workers, we enter the name of the Instructing Party into a charity donation draw. Every 2 months, we draw a winning name and donate £500 to the winner's nominated charity.

Here's what our 2025 benefitting charities had to say:



Nottinghamshire
Women's Aid
Survive & Thrive

'Contributions like this make a real difference, enabling us to keep our refuges open, and extend vital community outreach to women, children and young people experiencing domestic abuse in Nottinghamshire.'



RAY Ceredigion

'As a small grassroots charity, every contribution makes a real difference, and helps us to continue providing vital play, learning and community opportunities for people across Ceredigion.'



Sean's Place

'Donations like this enable us to continue offering free, tailored support to men across Sefton and Liverpool who are experiencing mental health challenges.'



'Contributions like this help fund specialist care across London for children living with life-limiting or life-threatening conditions, allowing us to provide valuable support where and when their families need us.'



**BLACKBURNE
HOUSE**

'We are committed to improving the lives of women, equipping them with the confidence they need to live full and independent lives. Donations such as these go a long way to helping us continue that work.'



'Donations like this allow us to continue providing essential care and services for patients in the west of Scotland facing cancer. Every contribution makes a difference, and we truly appreciate this support.'



Giving Back...

Just one more reason to choose AlphaBiolabs!



0333 600 1300

testing@alphabiolabs.com

www.alphabiolabs.co.uk

Animal Defenders International

Vox Studios North
1 Durham Street
London
SE11 5JH
T: 020 7630 3340

E: info@ad-international.org

W: www.ad-international.org | www.adiwildlifesanctuary.org.za

Animals and birds

Animal Defenders International (ADI) works worldwide to protect animals and the environment. Our investigations of wildlife trafficking, animals in circuses, animal experimentation and more drive awareness, education, legislation, and prosecutions.

ADI offers practical solutions, like advanced techniques to replace animals in research, and support for governments enforcing animal protection laws, such as bans on animal circuses – in Bolivia, Colombia, Peru and Guatemala, ADI tracked down and rescued every circus animal including bears, monkeys, lions, and tigers.

Many of these lions and tigers now enjoy natural habitats at the ADI Wildlife Sanctuary, South Africa and we have supported sanctuaries in Latin America, USA and Europe.

Please help with a bequest to Animal Defenders International.



in professional posts in Scotland.

Financial grants are given to:

- ▶ Individuals of any age, who are experiencing financial difficulties due to their inability to continue working.
- ▶ Retired members of the profession who receive little or no pension.

Sadly more and more nurses are finding it necessary to seek our help and through your generosity, we are able to offer additional support in the form of single grants to those less fortunate members of our profession.

The Fund is administered by a Committee of Trustees, most of whom are members of the nursing profession.

Donations may be sent to the Secretary at the Registered Office.

Cancer Prevention Research Trust

231 Roehampton Lane
London
SW15 4LB

T: 020 8785 7786

F: 020 8785 6466

E: cp45@yahoo.co.uk

W: www.cancerpreventionresearch.co.uk

Registered charity no: 265985

Medical research and welfare

The Cancer Prevention Research Trust's dream is to create a better world without cancer and to promote a healthier lifestyle for all. Since its inception in 1973, the Cancer Prevention Research Trust has supported pioneering research into the prevention of this serious disease.

There is nothing more important to us or to future generations than a world without cancer, so including us in your Will is a very effective way to be part of our continuing work and will help us pursue our dream.



Artists Futures Fund

E: info@artistsfuturesfund.org

W: www.artistsfuturesfund.org

Registered charity no: 270585

Cultural and environmental / Social

services and welfare / Trades and professions

Artists Futures Fund supports talented individuals to overcome barriers and flourish creatively and professionally. Operating under a Royal Charter since 1827, and originally founded by a collective of philanthropists, AFF is proud to have served the UK's artists' community for over 200 years.

Today, we support emerging artists to overcome significant socio-economic, physical and mental health barriers that would prevent them from pursuing careers as artists. By investing in diverse creative talent with bursaries to support living costs and offering exhibition, mentoring and professional development opportunities, our mission is to enrich the UK's cultural landscape and promote a more inclusive and innovative future for the arts.

We believe that in a period of financial constraint, protecting artistic talent is an investment in the UK's creative future. We are actively seeking donations so we can expand our support for talented artists in need.

Please visit www.artistsfuturesfund.org to learn more about Artists Futures Fund and how you can donate today. Thank you.

Artists Futures Fund is the working name of The Society for the Management and Distribution of The Artists Fund. Formerly known as the Artists' Benevolent Fund. Registered charity no: 270585



Friends of the Animals

17a Riverway
Newport

Isle of Wight
PO30 5UX

T: 01983 522 511

W: www.friendsoftheanimals.co.uk

Registered charity no: 1000249

Animals and birds / Education

Your wish to help animals will be assured by including a gift in your will to "Friends of the Animals". Concentrating on 'preventative' work such as spays, neuters, inoculations and free engraved discs; we never destroy a healthy animal, and keep admin costs to a minimum. Veterinary prices have rocketed and our goal is to employ our own Vet.

We have:-

- ▶ Re-homed 9,760+ animals.
- ▶ Spayed/neutered 44,000+ animals.
- ▶ Built stables for donkeys and ex-pit ponies.
- ▶ Currently funding 450+ rescued farm animals.
- ▶ Distributed over 1,829,000 items of pet food.
- ▶ Supplied almost 20,000 engraved, identity discs FOC.
- ▶ Given numerous educational talks on animal welfare.
- ▶ Wormed and inoculated thousands of animals – many for the first time in their lives!
- ▶ Stepped in to ensure food, safety and new homes for 97 Urban Farm animals, when their owner went out of business.



Benevolent Fund for Nurses in Scotland

Registered Office:

24A Ainslie Place
Edinburgh

EH3 6AJ

W: www.bfns.org.uk

Registered Scottish Charity No: SC006384

A company limited by guarantee registered in Scotland No: SC357442

Trades and professions

The Benevolent Fund for Nurses was established in 1925 to give assistance to any member of the profession who trained or worked



The majority of animals that come into our care arrive in a poor state. Our reward is seeing those same animals go to their new homes a few weeks later: well fed, groomed, wormed, inoculated and neutered.

VETERINARY TREATMENT is invariably our biggest outgoing.

You have many choices of Charities to support but no one appreciates it more – or tries harder than we do – to get the very best possible from every penny donated.

Your help today will ensure a happier tomorrow for countless animals. I send my grateful thanks.

*Helen Sinclair MBE (Awarded for 'Services to animal welfare')
Founder*

Independent Diabetes Trust

PO Box 294
Northampton
NN1 4XS

T: 01604 622837

F: 01604 622838

E: enquiries@iddtinternational.org

W: www.iddtinternational.org

Registered charity no: 1058284

Medical research and welfare

The Trust was set up in 1994 by people with diabetes for people with diabetes. We offer support and understanding to those with diabetes and their families. We provide a free telephone listening service and information leaflets to enable people with diabetes to have an informed choice of treatment and to help with the day to day difficulties of living with diabetes.

Around three quarters of a million people in the UK have insulin requiring diabetes and the incidence of diabetes in children is increasing. It is essential that we support research to help this very vulnerable group faced with a lifetime of diabetes. Your support will enable us to further develop our programme to help children and provide information for teachers about the needs of children with diabetes.

Diabetes can cause blindness, kidney failure, nerve damage and heart attack that severely affect the lives of all those living with diabetes. A cure for diabetes is still illusive so the Trust supports research that will help to improve the daily lives of people living with diabetes now. The studies we support involve people with diabetes under normal treatment conditions to ensure that it reflects 'real life' conditions. We also collate information from the experiences of people with diabetes to help to inform others.

We collect unused, in-date insulin to send to clinics in developing countries where people die for lack of affordable insulin. Please help us to continue our work, making cheques payable to 'Diabetes Trust Research and Care Fund'.



Lord Dowding Fund for Humane Research

Vox Studios North
1 Durham Street
London
SE11 5JH

T: 020 7630 3340

E: info@ldf.org.uk

W: www.ldf.org.uk

Animals and birds / Medical research and welfare

Lord Dowding Fund (LDF) supports and promotes advanced methods of scientific and medical research for testing products and curing disease, which replace the use of animals. The LDF educates and promotes adoption of advanced techniques. Grants awarded to re-



searchers working in a wide range of fields, including breast and lung cancer, microsurgery, Parkinson's disease, cataracts, cot deaths, product safety testing, kidney research, schizophrenia, biotechnology, hepatitis B, pain, infertility, tissue engineering and vascular disease.

By making a bequest to the Lord Dowding Fund you can support solid, scientific medical research that can save animals and help people.

Thank you.

National Anti-Vivisection Society

Vox Studios North

1 Durham Street

London

SE11 5JH

T: 020 7630 3340

E: info@navs.org.uk

W: www.navs.org.uk

Animals and birds / Medical research and welfare

Founded 1875, the National Anti-Vivisection Society (NAVS) is the world's premier society working to end the suffering of animals in laboratories. We educate and promote the replacement of animal experiments with sophisticated, non-animal methods. NAVS studies include legal and scientific research and critiques, investigations of laboratory practices, reports, videos. NAVS supports the replacement of animals with advanced, non-animal, scientific and medical research.

Every year millions of animals suffer and die in cruel and unreliable experiments. Please consider remembering the NAVS in your Will to end the suffering, and press for introduction of advanced techniques, relevant to people.

Thank you.



Redwings Horse Sanctuary

Hapton

Norwich

NR15 1SP

T: 01508 481030

F: 0870 458 1947

E: legacies@redwings.co.uk

W: www.redwings.org.uk

Registered charity no: 1068911

Animals and birds

Redwings believes that every horse, pony, donkey and mule has the right to a happy and healthy life, free of fear and neglect.

The 100% publicly funded charity rescues neglected and abandoned horses from all over the country, giving them a safe place to live for the rest of their days, and is currently home to over 1,500 – making Redwings the UK's largest horse sanctuary.

As well as providing a place of sanctuary to rescued horses, Redwings has five visitor centres in England and Scotland that enable supporters to see how their kind donations really can make a difference to horses and donkeys in need.

Redwings' Aylsham Visitor Centre in North Norfolk was funded by the gifts people had left in their Wills and has been vital in enabling the charity to continue to provide homes for the increasing number of abandoned horses in desperate need of love and care.

Gifts in Wills make up the largest proportion of Redwings' income and the charity simply wouldn't be able to exist without them. Remembering Redwings Horse Sanctuary in your Will is a wonderful way to support the charity's work and leave a lasting legacy that will help them to help horses and donkeys for generations to come. Whether your gift is large or small, every donation makes a real difference to the future of Redwings' residents.



The Ripple Pond

Ground Floor
66 High Street
Lewes
East Sussex
BN7 1XG

T: 0333 900 1028

E: help@theripplepond.org

W: www.theripplepond.org

Trades and professions

The Ripple Pond is the only UK charity to exist solely to support the adult family members of physically or psychologically injured British Armed Forces personnel and veterans.

We are a charity founded on the principles of mutual support and understanding for those caring for loved ones within the Armed Forces community.

Our vision is clear and unwavering: to ensure that everyone in this unique caregiving role “feels seen, heard, and supported.” Recognising the immense challenges faced by carers, our mission focuses on reducing isolation, building confidence, fostering resilience, empowering individuals, improving understanding, and enhancing overall well-being.



Sadly, Robbie was suffering from temporary ataxia – the loss of coordination and control of movement – and the team suspected he had sustained head trauma. To treat his symptoms, our vet put Robbie on a short course of antibiotics and pain relief. After one week of treatment, Robbie was once again flying around his cage and was ready for release.

We are so happy that we could help this beautiful bird back to the wild and although we never want any wild animal to find itself in trouble, it is nice to think that they know where to come, should they ever need help! Our doors are always open to any wild animal in need, even walk-ins!



To help us care for patients like Robbie, please consider donating. We receive no government or lottery funding, so we need your help – every penny helps us help them!

Tiggywinkles – the Wildlife Hospital Trust

Aston Road, Haddenham
Aylesbury
Bucks
HP17 8AF

T: 01844 292292

E: mail@sttiggywinkles.org.uk

W: www.tiggywinkles.com

President: The Countess of Buckinghamshire

Registered charity no: 286447

Animals and birds / Conservation / Education

Here at Tiggywinkles, we are dedicated to rescuing and rehabilitating British wildlife. We are open 24hrs a day, 7 days a week to help any wild animal in need and our service is free of charge. We rely on donations to provide our life-saving care for patients like Robbie the robin, who arrived in our care under unusual circumstances!

As the World's leading teaching wildlife hospital, we have lots of students on site and one of our Level Two Animal Care students found Robbie on the pathway of our grounds. She immediately realised he needed help as he was lying flat and couldn't fly. She rushed him into triage and our duty nurse quickly assessed his condition.



Alphabetical index

AlphaBiolabs	CA7
Artists Futures Fund	CA4
Benevolent Fund for Nurses in Scotland	CA2
Cancer Prevention Research Trust	CA1
Friends of the Animals	inside front cover
Independent Diabetes Trust	CA2
Lord Dowding Fund for Humane Research	CA3
National Anti-Vivisection Society	CA2
Redwings Horse Sanctuary	CA3
The Ripple Pond	CA5-6
Tiggywinkles – the Wildlife Hospital Trust	CA4

NewLawJournal

For advertising enquiries please contact:
advertisingsales@lexisnexis.co.uk

